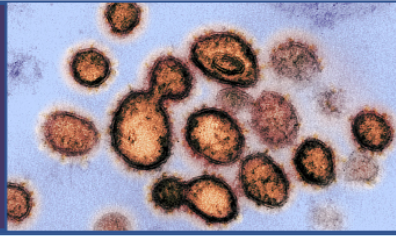


Covid-19 Literature Update



A CURATED SELECTION AND OVERVIEW OF COVID-19 PUBLICATIONS

Update March 23 - 29 2020

dr. Peter J. Lansberg MD, PhD

Weekly COVID-19 Literature Update
will keep you up-to-date with all recent PubMed publications
categorized by relevant topics

COVID-19 publications - Week 13 2020

PubMed based Covid-19 weekly literature update

For those interested in receiving weekly updates
click [here](#)

For questions and requests for topics to add send an e-mail
lansberg@gmail.com

Reliable on-line resources for Covid 19

[WHO](#)

[Daily dashboard](#)
[Country Guidance](#)
[Travel restriction](#)

[CDC](#)

[Covid Counter](#)

[AHA](#)

[ESC](#)

[Wikipedia](#)

[EMA](#)

[Evidence EPPI](#)

[Genomic epidemiology](#)
[Nice Guidelines Covid decisions](#)

[Corona Resource Center Harvard](#)

[BMJ](#)

[Cambridge University Press](#)

[Cochrane](#)

[Elsevier](#)

[JAMA](#)

[The Lancet](#)

[New England Journal of Medicine](#)

[Oxford University Press](#)

[PLOS](#)

[Springer Nature](#)

[Wiley](#)

[SSRN \(Preprints\)](#)

Trials & Registries

[CAPACITY European registry COVID 19 patients](#)

[WHO launches global megatrial](#)

[FDA launches Convalescent plasma trial](#)

[Lets Beat Covid-19 Survey to help plan hospital services](#)

[COVID IBD registry](#)

Mainstream Media

[Richard Lehman's Covid 19 review week 12 \(BMJ\)](#)
[Welcome to the virosphere \(NYT\)](#)
[Oxford study: Half of UK infected \(FT\)](#)
[Scientist identify 69 potential drug targets \(NYT\)](#)
[Impact of stopping social distancing in US \(NYT\)](#)
[Scientists lament Trump's embrace of risky malaria drugs for coronavirus \(Science\)](#)
[UK coronavirus home testing to be made available to millions \(Guardian\)](#)
[The low case fatality rate in Germany; why? \(Sky\)](#)
[Decontamination + re-use of N95 masks \(CNN\)](#)

Basic Science

1. Chan JF, Zhang AJ, Yuan S *et al.* **Simulation of the clinical and pathological manifestations of Coronavirus Disease 2019 (COVID-19) in golden Syrian hamster model: implications for disease pathogenesis and transmissibility.** *Clin Infect Dis* 2020. <http://www.ncbi.nlm.nih.gov/pubmed/?term=32215622>
2. Nie J, Li Q, Wu J *et al.* **Establishment and validation of a pseudovirus neutralization assay for SARS-CoV-2.** *Emerg Microbes Infect* 2020; 9:680-686. <http://www.ncbi.nlm.nih.gov/pubmed/?term=32207377>
3. Haveri A, Smura T, Kuivanen S *et al.* **Serological and molecular findings during SARS-CoV-2 infection: the first case study in Finland, January to February 2020.** *Euro Surveill* 2020; 25. <http://www.ncbi.nlm.nih.gov/pubmed/?term=32209163>
4. Fang Z, Zhang Y, Hang C *et al.* **Comparisons of nucleic acid conversion time of SARS-CoV-2 of different samples in ICU and non-ICU patients.** *J Infect* 2020. <http://www.ncbi.nlm.nih.gov/pubmed/?term=32209381>
5. Alimadadi A, Aryal S, Manandhar I *et al.* **Artificial Intelligence and Machine Learning to Fight COVID-19.** *Physiol Genomics* 2020. <http://www.ncbi.nlm.nih.gov/pubmed/?term=32216577>
6. Srinivasan S, Cui H, Gao Z *et al.* **Structural Genomics of SARS-CoV-2 Indicates Evolutionary Conserved Functional Regions of Viral Proteins.** *Viruses* 2020; 12. <http://www.ncbi.nlm.nih.gov/pubmed/?term=32218151>

Biomarkers - Genetics

1. Chang, Mo G, Yuan X *et al.* **Time Kinetics of Viral Clearance and Resolution of Symptoms in Novel Coronavirus Infection.** *Am J Respir Crit Care Med* 2020. <http://www.ncbi.nlm.nih.gov/pubmed/?term=32200654>
2. Wu D, Yang XO. **TH17 responses in cytokine storm of COVID-19: An emerging target of JAK2 inhibitor Fedratinib.** *J Microbiol Immunol Infect* 2020. <http://www.ncbi.nlm.nih.gov/pubmed/?term=32205092>

Children

1. Ludvigsson JF. **Systematic review of COVID-19 in children show milder cases and a better prognosis than adults.** *Acta Paediatr* 2020. <http://www.ncbi.nlm.nih.gov/pubmed/?term=32202343>
2. Zheng F, Liao C, Fan QH *et al.* **Clinical Characteristics of Children with Coronavirus Disease 2019 in Hubei, China.** *Curr Med Sci* 2020. <http://www.ncbi.nlm.nih.gov/pubmed/?term=32207032>
3. Su L, Ma X, Yu H *et al.* **The different clinical characteristics of corona virus disease cases between children and their families in China - the character of children with COVID-19.** *Emerg Microbes Infect* 2020; 9:707-713. <http://www.ncbi.nlm.nih.gov/pubmed/?term=32208917>
4. Voitl P, Niehues T. **[Coronavirus disease in children-initial data from Wuhan].** *Monatsschr Kinderheilkd* 2020;1-2. <http://www.ncbi.nlm.nih.gov/pubmed/?term=32218613>

Clinical Features

1. Chang, Mo G, Yuan X *et al.* **Time Kinetics of Viral Clearance and Resolution of Symptoms in Novel Coronavirus Infection.** *Am J Respir Crit Care Med* 2020. <http://www.ncbi.nlm.nih.gov/pubmed/?term=32200654>
2. Nicastrì E, D'Abramo A, Faggioni G *et al.* **Coronavirus disease (COVID-19) in a paucisymptomatic patient: epidemiological and clinical challenge in settings with limited community transmission, Italy, February 2020.** *Euro Surveill* 2020; 25. <http://www.ncbi.nlm.nih.gov/pubmed/?term=32209164>
3. Wang LS, Wang YR, Ye DW, Liu QQ. **A review of the 2019 Novel Coronavirus (COVID-19) based on current evidence.** *Int J Antimicrob Agents* 2020;105948. <http://www.ncbi.nlm.nih.gov/pubmed/?term=32201353>
4. Recalcati S. **Cutaneous manifestations in COVID-19: a first perspective.** *J Eur Acad Dermatol Venereol* 2020. <http://www.ncbi.nlm.nih.gov/pubmed/?term=32215952>

Complications

1. Thomas-Ruddel D, Winning J, Dickmann P *et al.* [Coronavirus disease 2019 (COVID-19): update for anesthesiologists and intensivists March 2020]. *Anaesthetist* 2020. <http://www.ncbi.nlm.nih.gov/pubmed/?term=32189015>
2. Sun R, Liu H, Wang X. Mediastinal Emphysema, Giant Bulla, and Pneumothorax Developed during the Course of COVID-19 Pneumonia. *Korean J Radiol* 2020. <http://www.ncbi.nlm.nih.gov/pubmed/?term=32207255>
3. Luers JC, Klussmann JP, Guntinas-Lichius O. [The Covid-19 pandemic and otolaryngology: What it comes down to?]. *Laryngorhinootologie* 2020. <http://www.ncbi.nlm.nih.gov/pubmed/?term=32215896>

Cured – recovered

1. Zhang JF, Yan K, Ye HH *et al.* SARS-CoV-2 turned positive in a discharged patient with COVID-19 arouses concern regarding the present standard for discharge. *Int J Infect Dis* 2020. <http://www.ncbi.nlm.nih.gov/pubmed/?term=32200109>

Cardiovascular disease

1. Clerkin KJ, Fried JA, Raikhelkar J *et al.* Coronavirus Disease 2019 (COVID-19) and Cardiovascular Disease. *Circulation* 2020. <http://www.ncbi.nlm.nih.gov/pubmed/?term=32200663>
2. Guo T, Fan Y, Chen M *et al.* Cardiovascular Implications of Fatal Outcomes of Patients With Coronavirus Disease 2019 (COVID-19). *JAMA Cardiol* 2020. <http://www.ncbi.nlm.nih.gov/pubmed/?term=32219356>
3. Shi S, Qin M, Shen B *et al.* Association of Cardiac Injury With Mortality in Hospitalized Patients With COVID-19 in Wuhan, China. *JAMA Cardiol* 2020. <http://www.ncbi.nlm.nih.gov/pubmed/?term=32211816>

Diagnosis

1. Li Y, Yao L, Li J *et al.* Stability Issues of RT-PCR Testing of SARS-CoV-2 for Hospitalized Patients Clinically Diagnosed with COVID-19. *J Med Virol* 2020. <http://www.ncbi.nlm.nih.gov/pubmed/?term=32219885>
2. Amrane S, Tissot-Dupont H, Doudier B *et al.* Rapid viral diagnosis and ambulatory management of suspected COVID-19 cases presenting at the infectious diseases referral hospital in Marseille, France, - January 31st to March 1st, 2020: A respiratory virus snapshot. *Travel Med Infect Dis* 2020:101632. <http://www.ncbi.nlm.nih.gov/pubmed/?term=32205269>

Elderly

1. D'Adamo H, Yoshikawa T, Ouslander JG. Coronavirus Disease 2019 in Geriatrics and Long-term Care: The ABCDs of COVID-19. *J Am Geriatr Soc* 2020. <http://www.ncbi.nlm.nih.gov/pubmed/?term=32212386>
2. Mazumder H, Hossain MM, Das A. Geriatric Care during Public Health Emergencies: Lessons Learned from Novel Corona Virus Disease (COVID-19) Pandemic. *J Gerontol Soc Work* 2020:1-2. <http://www.ncbi.nlm.nih.gov/pubmed/?term=32216550>
3. K K, A K, Y F. COVID-19: Active measures to support community-dwelling older adults. *Travel Med Infect Dis* 2020:101638. <http://www.ncbi.nlm.nih.gov/pubmed/?term=32205272>

Epidemiology

1. Sun Y, Koh V, Marimuthu K *et al.* Epidemiological and Clinical Predictors of COVID-19. *Clin Infect Dis* 2020. <http://www.ncbi.nlm.nih.gov/pubmed/?term=32211755>
2. Escher AR, Jr. An Ounce of Prevention: Coronavirus (COVID-19) and Mass Gatherings. *Cureus* 2020; 12:e7345. <http://www.ncbi.nlm.nih.gov/pubmed/?term=32211279>
3. De Salazar PM, Niehus R, Taylor A *et al.* Identifying Locations with Possible Undetected Imported Severe Acute Respiratory Syndrome Coronavirus 2 Cases by Using Importation Predictions. *Emerg Infect Dis* 2020; 26. <http://www.ncbi.nlm.nih.gov/pubmed/?term=32207679>
4. Nicastrì E, D'Abamo A, Faggioni G *et al.* Coronavirus disease (COVID-19) in a paucisymptomatic patient: epidemiological and clinical challenge in settings with limited community transmission, Italy, February 2020. *Euro Surveill* 2020; 25. <http://www.ncbi.nlm.nih.gov/pubmed/?term=32209164>
5. Zhang S, Wang Z, Chang R *et al.* COVID-19 containment: China provides important lessons for global response. *Front Med* 2020. <http://www.ncbi.nlm.nih.gov/pubmed/?term=32212059>
6. Gostin LO, Friedman EA, Wetter SA. Responding to COVID-19: How to Navigate a Public Health Emergency Legally and Ethically. *Hastings Cent Rep* 2020. <http://www.ncbi.nlm.nih.gov/pubmed/?term=32219845>
7. Mandal S, Bhatnagar T, Arinaminpathy N *et al.* Prudent public health intervention strategies to control the coronavirus disease 2019 transmission in India: A mathematical model-based approach. *Indian J Med Res* 2020. <http://www.ncbi.nlm.nih.gov/pubmed/?term=32202261>
8. Roussel Y, Giraud-Gatineau A, Jimeno MT *et al.* SARS-CoV-2: fear versus data. *Int J Antimicrob Agents* 2020:105947. <http://www.ncbi.nlm.nih.gov/pubmed/?term=32201354>
9. Wang LS, Wang YR, Ye DW, Liu QQ. A review of the 2019 Novel Coronavirus (COVID-19) based on current evidence. *Int J Antimicrob Agents* 2020:105948. <http://www.ncbi.nlm.nih.gov/pubmed/?term=32201353>
10. Gudi SK, Tiwari KK. Preparedness and Lessons Learned from the Novel Coronavirus Disease. *Int J Occup Environ Med* 2020; 11:108-112. <http://www.ncbi.nlm.nih.gov/pubmed/?term=32218558>

11. Habibzadeh F, Lang T. **The Coronavirus Pandemic: "The Show Must NOT Go On"**. *Int J Occup Environ Med* 2020; 11:63-64. <http://www.ncbi.nlm.nih.gov/pubmed/?term=32218554>
12. Dahl E. **Coronavirus (Covid-19) outbreak on the cruise ship Diamond Princess**. *Int Marit Health* 2020; 71:5-8. <http://www.ncbi.nlm.nih.gov/pubmed/?term=32212140>
13. Yasri S, Wiwanitkit V. **COVID-19, guests and crews of cruise: observation on Thai citizens**. *Int Marit Health* 2020; 71:9. <http://www.ncbi.nlm.nih.gov/pubmed/?term=32212141>
14. Radi G, Diotallevi F, Campanati A, Offidani A. **Global coronavirus pandemic (2019-nCoV): Implication for an Italian medium size dermatological clinic of a ii level hospital**. *J Eur Acad Dermatol Venereol* 2020. <http://www.ncbi.nlm.nih.gov/pubmed/?term=32201972>
15. Lau H, Khosrawipour V, Kocbach P *et al*. **Internationally lost COVID-19 cases**. *J Microbiol Immunol Infect* 2020. <http://www.ncbi.nlm.nih.gov/pubmed/?term=32205091>
16. Zhao K, Long C, Wang Y *et al*. **Negligible risk of the COVID-19 resurgence caused by work resuming in China (outside Hubei): a statistical probability study**. *J Public Health (Oxf)* 2020. <http://www.ncbi.nlm.nih.gov/pubmed/?term=32219398>
17. Al Nsour M, Bashier H, Al Serouri A *et al*. **The Role of the Global Health Development/Eastern Mediterranean Public Health Network and the Eastern Mediterranean Field Epidemiology Training Programs in Preparedness for COVID-19**. *JMIR Public Health Surveill* 2020; 6:e18503. <http://www.ncbi.nlm.nih.gov/pubmed/?term=32217506>
18. McMichael TM, Currie DW, Clark S *et al*. **Epidemiology of Covid-19 in a Long-Term Care Facility in King County, Washington**. *N Engl J Med* 2020. <http://www.ncbi.nlm.nih.gov/pubmed/?term=32220208>
19. Hsu LY, Chia PY, Vasoo S. **A midpoint perspective on the COVID-19 pandemic**. *Singapore Med J* 2020. <http://www.ncbi.nlm.nih.gov/pubmed/?term=32211911>
20. Gan H, Zhang Y, Yuan M *et al*. **[Epidemiological analysis on 1 052 cases of COVID-19 in epidemic clusters]**. *Zhonghua Liu Xing Bing Xue Za Zhi* 2020; 41:E027. <http://www.ncbi.nlm.nih.gov/pubmed/?term=32213270>
21. Hu JX, Liu T, Xiao JP *et al*. **[Risk assessment and early warning of imported COVID-19 in 21 cities, Guangdong province]**. *Zhonghua Liu Xing Bing Xue Za Zhi* 2020; 41:658-662. <http://www.ncbi.nlm.nih.gov/pubmed/?term=32213268>
22. Liu YF, Li JM, Zhou PH *et al*. **[Analysis on cluster cases of COVID-19 in Tianjin]**. *Zhonghua Liu Xing Bing Xue Za Zhi* 2020; 41:654-657. <http://www.ncbi.nlm.nih.gov/pubmed/?term=32213269>

Gastro-enterology-hepatology

1. Kotfis K, Skonieczna-Zydecka K. **COVID-19: gastrointestinal symptoms and potential sources of 2019-nCoV transmission**. *Anaesthesiol Intensive Ther* 2020. <http://www.ncbi.nlm.nih.gov/pubmed/?term=32200613>
2. Fiorino G, Allocca M, Furfaro F *et al*. **Inflammatory bowel disease care in the COVID-19 pandemic era: the Humanitas, Milan experience**. *J Crohns Colitis* 2020. <http://www.ncbi.nlm.nih.gov/pubmed/?term=32211765>
3. Wong SH, Lui RN, Sung JJ. **Covid-19 and the Digestive System**. *J Gastroenterol Hepatol* 2020. <http://www.ncbi.nlm.nih.gov/pubmed/?term=32215956>

Guidelines -Consensus

1. Thachil J, Tang N, Gando S *et al*. **ISTH interim guidance on recognition and management of coagulopathy in COVID-19**. *Journal of Thrombosis and Haemostasis* 2020.

Imaging

1. Li M, Lei P, Zeng B *et al*. **Coronavirus Disease (COVID-19): Spectrum of CT Findings and Temporal Progression of the Disease**. *Acad Radiol* 2020. <http://www.ncbi.nlm.nih.gov/pubmed/?term=32204987>
2. Li K, Fang Y, Li W *et al*. **CT image visual quantitative evaluation and clinical classification of coronavirus disease (COVID-19)**. *Eur Radiol* 2020. <http://www.ncbi.nlm.nih.gov/pubmed/?term=32215691>
3. Zhou Z, Guo D, Li C *et al*. **Coronavirus disease 2019: initial chest CT findings**. *Eur Radiol* 2020. <http://www.ncbi.nlm.nih.gov/pubmed/?term=32211963>
4. Huang Z, Zhao S, Li Z *et al*. **The Battle Against Coronavirus Disease 2019 (COVID-19): Emergency Management and Infection Control in a Radiology Department**. *J Am Coll Radiol* 2020. <http://www.ncbi.nlm.nih.gov/pubmed/?term=32208140>
5. Sun R, Liu H, Wang X. **Mediastinal Emphysema, Giant Bulla, and Pneumothorax Developed during the Course of COVID-19 Pneumonia**. *Korean J Radiol* 2020. <http://www.ncbi.nlm.nih.gov/pubmed/?term=32207255>
6. Hamer OW, Salzberger B, Gebauer J *et al*. **CT morphology of COVID-19: Case report and review of literature**. *Rofo* 2020. <http://www.ncbi.nlm.nih.gov/pubmed/?term=32215898>
7. Moro F, Buonsenso D, Moruzzi MC *et al*. **How to perform lung ultrasound in pregnant women with suspected COVID-19 infection**. *Ultrasound Obstet Gynecol* 2020. <http://www.ncbi.nlm.nih.gov/pubmed/?term=32207208>

Management

1. Liu X, Liu X, Xu Y *et al*. **Ventilatory Ratio in Hypercapnic Mechanically Ventilated Patients with COVID-19 Associated ARDS**. *Am J Respir Crit Care Med* 2020. <http://www.ncbi.nlm.nih.gov/pubmed/?term=32203672>
2. Shankar A, Saini D, Roy S *et al*. **Cancer Care Delivery Challenges Amidst Coronavirus Disease - 19 (COVID-19) Outbreak: Specific Precautions for Cancer Patients and Cancer Care Providers to**

- Prevent Spread.** *Asian Pac J Cancer Prev* 2020; 21:569-573. <http://www.ncbi.nlm.nih.gov/pubmed/?term=32212779>
- Wu CN, Xia LZ, Li KH *et al.* **High-flow nasal-oxygenation-assisted fibreoptic tracheal intubation in critically ill patients with COVID-19 pneumonia: a prospective randomised controlled trial.** *Br J Anaesth* 2020. <http://www.ncbi.nlm.nih.gov/pubmed/?term=32200994>
 - Paganini M, Conti A, Weinstein E *et al.* **Translating COVID-19 Pandemic Surge Theory to Practice in the Emergency Department: How to Expand Structure.** *Disaster Med Public Health Prep* 2020:1-30. <http://www.ncbi.nlm.nih.gov/pubmed/?term=32216865>
 - Bersanelli M. **Controversies about COVID-19 and anticancer treatment with immune checkpoint inhibitors.** *Immunotherapy* 2020. <http://www.ncbi.nlm.nih.gov/pubmed/?term=32212881>
 - Xiao Y, Tan C, Duan J *et al.* **An Effective Model for the Outpatient Management of COVID-19.** *Infect Control Hosp Epidemiol* 2020:1-4. <http://www.ncbi.nlm.nih.gov/pubmed/?term=32213232>
 - Nicastri E, Petrosillo N, Bartoli TA *et al.* **National Institute for the Infectious Diseases "L. Spallanzani", IRCCS. Recommendations for COVID-19 clinical management.** *Infect Dis Rep* 2020; 12:8543. <http://www.ncbi.nlm.nih.gov/pubmed/?term=32218915>
 - Wang LS, Wang YR, Ye DW, Liu QQ. **A review of the 2019 Novel Coronavirus (COVID-19) based on current evidence.** *Int J Antimicrob Agents* 2020:105948. <http://www.ncbi.nlm.nih.gov/pubmed/?term=32201353>
 - Kwatra SG, Sweren RJ, Grossberg AL. **Dermatology practices as vectors for COVID-19 transmission: a call for immediate cessation of non-emergent dermatology visits.** *J Am Acad Dermatol* 2020. <http://www.ncbi.nlm.nih.gov/pubmed/?term=32213307>
 - Zhang Z, Yao W, Wang Y *et al.* **Wuhan and Hubei COVID-19 mortality analysis reveals the critical role of timely supply of medical resources.** *J Infect* 2020. <http://www.ncbi.nlm.nih.gov/pubmed/?term=32209384>
 - Luers JC, Klusmann JP, Guntinas-Lichius O. **[The Covid-19 pandemic and otolaryngology: What it comes down to?].** *Laryngorhinootologie* 2020. <http://www.ncbi.nlm.nih.gov/pubmed/?term=32215896>
 - Ma WX, Ran XW. **[The Management of Blood Glucose Should be Emphasized in the Treatment of COVID-19].** *Sichuan Da Xue Xue Bao Yi Xue Ban* 2020; 51:146-150. <http://www.ncbi.nlm.nih.gov/pubmed/?term=32220179>
 - Amrane S, Tissot-Dupont H, Doudier B *et al.* **Rapid viral diagnosis and ambulatory management of suspected COVID-19 cases presenting at the infectious diseases referral hospital in Marseille, France, - January 31st to March 1st, 2020: A respiratory virus snapshot.** *Travel Med Infect Dis* 2020:101632. <http://www.ncbi.nlm.nih.gov/pubmed/?term=32205269>

Mortality

- Hanff TC, Harhay MO, Brown TS *et al.* **Is There an Association Between COVID-19 Mortality and the Renin-Angiotensin System-a Call for Epidemiologic Investigations.** *Clin Infect Dis* 2020. <http://www.ncbi.nlm.nih.gov/pubmed/?term=32215613>
- Roussel Y, Giraud-Gatineau A, Jimeno MT *et al.* **SARS-CoV-2: fear versus data.** *Int J Antimicrob Agents* 2020:105947. <http://www.ncbi.nlm.nih.gov/pubmed/?term=32201354>
- Zhang Z, Yao W, Wang Y *et al.* **Wuhan and Hubei COVID-19 mortality analysis reveals the critical role of timely supply of medical resources.** *J Infect* 2020. <http://www.ncbi.nlm.nih.gov/pubmed/?term=32209384>

Other - Miscellaneous

- Seddighi H. **Trust in humanitarian aid from the earthquake 2017 to COVID-19 in Iran: A policy analysis.** *Disaster Med Public Health Prep* 2020:1-9. <http://www.ncbi.nlm.nih.gov/pubmed/?term=32216858>
- Eisen MB, Akhmanova A, Behrens TE, Weigel D. **Publishing in the time of COVID-19.** *Elife* 2020; 9. <http://www.ncbi.nlm.nih.gov/pubmed/?term=32209226>
- Weissgerber T, Bediako Y, de Winde CM *et al.* **Mitigating the impact of conference and travel cancellations on researchers' futures.** *Elife* 2020; 9. <http://www.ncbi.nlm.nih.gov/pubmed/?term=32216872>
- Dong L, Bouey J. **Public Mental Health Crisis during COVID-19 Pandemic, China.** *Emerg Infect Dis* 2020; 26. <http://www.ncbi.nlm.nih.gov/pubmed/?term=32202993>

Renal disease

- Perico L, Benigni A, Remuzzi G. **Should COVID-19 Concern Nephrologists? Why and to What Extent? The Emerging Impasse of Angiotensin Blockade.** *Nephron* 2020:1-9. <http://www.ncbi.nlm.nih.gov/pubmed/?term=32203970>

Reviews

- Ludvigsson JF. **Systematic review of COVID-19 in children show milder cases and a better prognosis than adults.** *Acta Paediatr* 2020. <http://www.ncbi.nlm.nih.gov/pubmed/?term=32202343>
- Clerkin KJ, Fried JA, Raikhelkar J *et al.* **Coronavirus Disease 2019 (COVID-19) and Cardiovascular Disease.** *Circulation* 2020. <http://www.ncbi.nlm.nih.gov/pubmed/?term=32200663>
- Wang SS, Zhou X, Lin XG *et al.* **Experience of Clinical Management for Pregnant Women and Newborns with Novel Coronavirus Pneumonia in Tongji Hospital, China.** *Curr Med Sci* 2020. <http://www.ncbi.nlm.nih.gov/pubmed/?term=32219626>
- Peyronnet V, Sibiude J, Deruelle P *et al.* **[Infection with SARS-CoV-2 in pregnancy. Information and proposed care. CNGOF].** *Gynecol Obstet Fertil Senol* 2020. <http://www.ncbi.nlm.nih.gov/pubmed/?term=32199996>

- Danser AHJ, Epstein M, Battle D. **Renin-Angiotensin System Blockers and the COVID-19 Pandemic: At Present There Is No Evidence to Abandon Renin-Angiotensin System Blockers.** *Hypertension* 2020:Hypertensionaha12015082. <http://www.ncbi.nlm.nih.gov/pubmed/?term=32208987>
- Viceconte G, Petrosillo N. **COVID-19 R0: Magic number or conundrum?** *Infect Dis Rep* 2020; 12:8516. <http://www.ncbi.nlm.nih.gov/pubmed/?term=32201554>
- Wang LS, Wang YR, Ye DW, Liu QQ. **A review of the 2019 Novel Coronavirus (COVID-19) based on current evidence.** *Int J Antimicrob Agents* 2020:105948. <http://www.ncbi.nlm.nih.gov/pubmed/?term=32201353>
- D'Adamo H, Yoshikawa T, Ouslander JG. **Coronavirus Disease 2019 in Geriatrics and Long-term Care: The ABCDs of COVID-19.** *J Am Geriatr Soc* 2020. <http://www.ncbi.nlm.nih.gov/pubmed/?term=32212386>
- Wong SH, Lui RN, Sung JJ. **Covid-19 and the Digestive System.** *J Gastroenterol Hepatol* 2020. <http://www.ncbi.nlm.nih.gov/pubmed/?term=32215956>
- Zhang C, Huang S, Zheng F, Dai Y. **Controversial treatments: an updated understanding of the Coronavirus Disease 2019.** *J Med Virol* 2020. <http://www.ncbi.nlm.nih.gov/pubmed/?term=32219882>
- Luers JC, Klussmann JP, Guntinas-Lichius O. **[The Covid-19 pandemic and otolaryngology: What it comes down to?].** *Laryngorhinootologie* 2020. <http://www.ncbi.nlm.nih.gov/pubmed/?term=32215896>
- Vukkadala N, Qian ZJ, Holsinger FC *et al.* **COVID-19 and the otolaryngologist - preliminary evidence-based review.** *Laryngoscope* 2020. <http://www.ncbi.nlm.nih.gov/pubmed/?term=32219846>
- Hamer OW, Salzberger B, Gebauer J *et al.* **CT morphology of COVID-19: Case report and review of literature.** *Rofu* 2020. <http://www.ncbi.nlm.nih.gov/pubmed/?term=32215898>

Risk factors

- Chen W, Lan Y, Yuan X *et al.* **Detectable 2019-nCoV viral RNA in blood is a strong indicator for the further clinical severity.** *Emerging microbes & infections* 2020; 9:469-473. <http://www.ncbi.nlm.nih.gov/pubmed/?term=32102625>
- Wu J, Li W, Shi X *et al.* **Early antiviral treatment contributes to alleviate the severity and improve the prognosis of patients with novel coronavirus disease (COVID-19).** *J Intern Med* 2020. <http://www.ncbi.nlm.nih.gov/pubmed/?term=32220033>
- Ji HL, Zhao R, Matalon S, Matthay MA. **Elevated plasmin(ogen) as a common risk factor for COVID-19 susceptibility.** *Physiol Rev* 2020. <http://www.ncbi.nlm.nih.gov/pubmed/?term=32216698>
- Vardavas CI, Nikitara K. **COVID-19 and smoking: A systematic review of the evidence.** *Tob Induc Dis* 2020; 18:20. <http://www.ncbi.nlm.nih.gov/pubmed/?term=32206052>

Safety – protection

- Hanff TC, Harhay MO, Brown TS *et al.* **Is There an Association Between COVID-19 Mortality and the Renin-Angiotensin System-a Call for Epidemiologic Investigations.** *Clin Infect Dis* 2020. <http://www.ncbi.nlm.nih.gov/pubmed/?term=32215613>
- Marin GH. **Facts and reflections on COVID-19 and anti-hypertensives drugs.** *Drug Discov Ther* 2020. <http://www.ncbi.nlm.nih.gov/pubmed/?term=32213760>
- Zhang Z, Liu S, Xiang M *et al.* **Protecting healthcare personnel from 2019-nCoV infection risks: lessons and suggestions.** *Front Med* 2020. <http://www.ncbi.nlm.nih.gov/pubmed/?term=32212058>
- Danser AHJ, Epstein M, Battle D. **Renin-Angiotensin System Blockers and the COVID-19 Pandemic: At Present There Is No Evidence to Abandon Renin-Angiotensin System Blockers.** *Hypertension* 2020:Hypertensionaha12015082. <http://www.ncbi.nlm.nih.gov/pubmed/?term=32208987>
- Bersanelli M. **Controversies about COVID-19 and anticancer treatment with immune checkpoint inhibitors.** *Immunotherapy* 2020. <http://www.ncbi.nlm.nih.gov/pubmed/?term=32212881>
- Huang Z, Zhao S, Li Z *et al.* **The Battle Against Coronavirus Disease 2019 (COVID-19): Emergency Management and Infection Control in a Radiology Department.** *J Am Coll Radiol* 2020. <http://www.ncbi.nlm.nih.gov/pubmed/?term=32208140>
- Lotfinejad N, Peters A, Pittet D. **Hand hygiene and the novel coronavirus pandemic: The role of healthcare workers.** *J Hosp Infect* 2020. <http://www.ncbi.nlm.nih.gov/pubmed/?term=32201339>
- Yen MY, Schwartz J, Chen SY *et al.* **Interrupting COVID-19 transmission by implementing enhanced traffic control bundling: Implications for global prevention and control efforts.** *J Microbiol Immunol Infect* 2020. <http://www.ncbi.nlm.nih.gov/pubmed/?term=32205090>
- Chen TY, Lai HW, Hou IL *et al.* **Buffer areas in emergency department to handle potential COVID-19 community infection in Taiwan.** *Travel Med Infect Dis* 2020:101635. <http://www.ncbi.nlm.nih.gov/pubmed/?term=32205268>

Treatment options

- Favalli EG, Ingegnoli F, De Lucia O *et al.* **COVID-19 infection and rheumatoid arthritis: Faraway, so close!** *Autoimmun Rev* 2020:102523. <http://www.ncbi.nlm.nih.gov/pubmed/?term=32205186>
- Rayner CR, Smith PF, Hershberger K, Wesche D. **Optimizing COVID-19 candidate therapeutics: Thinking Without Borders.** *Clin Transl Sci* 2020. <http://www.ncbi.nlm.nih.gov/pubmed/?term=32212378>
- Duan YJ, Liu Q, Zhao SQ *et al.* **The Trial of Chloroquine in the Treatment of Corona Virus Disease 2019 COVID-19 and Its Research Progress in Forensic Toxicology.** *Fa Yi Xue Za Zhi* 2020; 36. <http://www.ncbi.nlm.nih.gov/pubmed/?term=32212513>
- Bhatnagar T, Murhekar MV, Soneja M *et al.* **Lopinavir/ritonavir combination therapy amongst symptomatic coronavirus disease 2019 patients in India: Protocol for restricted public health emergency use.** *Indian J Med Res* 2020. <http://www.ncbi.nlm.nih.gov/pubmed/?term=32202256>
- Gautret P, Lagier JC, Parola P *et al.* **Hydroxychloroquine and azithromycin as a treatment of COVID-19: results of an open-label non-randomized clinical trial.** *Int J Antimicrob Agents* 2020:105949. <http://www.ncbi.nlm.nih.gov/pubmed/?term=32205204>

6. Wang LS, Wang YR, Ye DW, Liu QQ. **A review of the 2019 Novel Coronavirus (COVID-19) based on current evidence.** Int J Antimicrob Agents 2020;105948. <http://www.ncbi.nlm.nih.gov/pubmed/?term=32201353>
7. Wu J, Li W, Shi X *et al.* **Early antiviral treatment contributes to alleviate the severity and improve the prognosis of patients with novel coronavirus disease (COVID-19).** J Intern Med 2020. <http://www.ncbi.nlm.nih.gov/pubmed/?term=32220033>
8. Zhang C, Huang S, Zheng F, Dai Y. **Controversial treatments: an updated understanding of the Coronavirus Disease 2019.** J Med Virol 2020. <http://www.ncbi.nlm.nih.gov/pubmed/?term=32219882>
9. Wu D, Yang XO. **TH17 responses in cytokine storm of COVID-19: An emerging target of JAK2 inhibitor Fedratinib.** J Microbiol Immunol Infect 2020. <http://www.ncbi.nlm.nih.gov/pubmed/?term=32205092>
10. Shen C, Wang Z, Zhao F *et al.* **Treatment of 5 Critically Ill Patients With COVID-19 With Convalescent Plasma.** JAMA 2020. <http://www.ncbi.nlm.nih.gov/pubmed/?term=32219428>
11. Zhang R, Wang X, Ni L *et al.* **COVID-19: Melatonin as a potential adjuvant treatment.** Life Sci 2020;117583. <http://www.ncbi.nlm.nih.gov/pubmed/?term=32217117>
12. Ji HL, Zhao R, Matalon S, Matthay MA. **Elevated plasmin(ogen) as a common risk factor for COVID-19 susceptibility.** Physiol Rev 2020. <http://www.ncbi.nlm.nih.gov/pubmed/?term=32216698>
13. Yan CX, Li J, Shen X *et al.* **[Biological Product Development Strategies for Prevention and Treatment of Coronavirus Disease 2019].** Sichuan Da Xue Xue Bao Yi Xue Ban 2020; 51:139-145. <http://www.ncbi.nlm.nih.gov/pubmed/?term=32220178>

Vaccines

1. Chen WH, Strych U, Hotez PJ, Bottazzi ME. **The SARS-CoV-2 Vaccine Pipeline: an Overview.** Curr Trop Med Rep 2020;1-4. <http://www.ncbi.nlm.nih.gov/pubmed/?term=32219057>
2. Nie J, Li Q, Wu J *et al.* **Establishment and validation of a pseudovirus neutralization assay for SARS-CoV-2.** Emerg Microbes Infect 2020; 9:680-686. <http://www.ncbi.nlm.nih.gov/pubmed/?term=32207377>

Women – pregnancy

1. Dashraath P, Jing Lin Jeslyn W, Mei Xian Karen L *et al.* **Coronavirus Disease 2019 (COVID-19) Pandemic and Pregnancy.** Am J Obstet Gynecol 2020. <http://www.ncbi.nlm.nih.gov/pubmed/?term=32217113>
2. Qi H, Luo X, Zheng Y *et al.* **Safe Delivery for COVID-19 Infected Pregnancies.** Bjog 2020. <http://www.ncbi.nlm.nih.gov/pubmed/?term=32219995>
3. Wang SS, Zhou X, Lin XG *et al.* **Experience of Clinical Management for Pregnant Women and Newborns with Novel Coronavirus Pneumonia in Tongji Hospital, China.** Curr Med Sci 2020. <http://www.ncbi.nlm.nih.gov/pubmed/?term=32219626>
4. Peyronnet V, Sibiude J, Deruelle P *et al.* **[Infection with SARS-CoV-2 in pregnancy. Information and proposed care. CNGOF.].** Gynecol Obstet Fertil Senol 2020. <http://www.ncbi.nlm.nih.gov/pubmed/?term=32199996>
5. Chen Y, Li Z, Zhang YY *et al.* **Maternal health care management during the outbreak of coronavirus disease 2019 (COVID-19).** J Med Virol 2020. <http://www.ncbi.nlm.nih.gov/pubmed/?term=32219871>
6. Michels G, Ochmann U, Cranen R. **[Maternity protection-also during the corona crisis].** Med Klin Intensivmed Notfmed 2020. <http://www.ncbi.nlm.nih.gov/pubmed/?term=32219471>
7. Moro F, Buonsenso D, Moruzzi MC *et al.* **How to perform lung ultrasound in pregnant women with suspected COVID-19 infection.** Ultrasound Obstet Gynecol 2020. <http://www.ncbi.nlm.nih.gov/pubmed/?term=32207208>

to subscribe click [here](#)
